

HYDRAULIC SEPARATOR



Description

The patented MB separator was created to make independent connected hydraulic circuits. This system is provided with inspectable dirt separator, which allows beyond the separation of circuit impurities, also the means of intervening on filter cleaning the device is magnets equipped to restrain ferrous impurity, it also has automatic and manual air display valve, it is stainless steel sheet insulated and protected, both ideal for heating and cooling systems.

Cleaning and maintenance

To function correctly, the hydraulic separator requires a correct maintenance. Close the circuit and download the pressure from the valve, now it's possible to remove the inspection cap, using the supplied key, remove the filtering cartridge and proceed with the cleaning operation.

Operation

Malfunctioning conditions between circuits may occur creating anomalous variations flow rates and prevalence, when in the same plant we find a primary circuit with its own pump and a secondary user circuit with one or more pumps. The hydraulic separator solves these problems.

Technical data

CODE	SEDEA
WORKING TEMPERATURE	0°-110°
MAXIMUM WORKING PRESSURE	10 bar
MAXIMUM FLUID SPEED	1,3 M/S
FLUID	water, glycol solutions 50%
SEPARATOR FITS	female threaded connector fits or flanged fits
DRAIN VALVE CONNECTION	¼"F UNI ISO 228
ACCESSORIES CONNECTIONS	½"F – ¾"F UNI ISO 228
AUTOMATIC VENT AIR VALVE	½"F - 2"F UNI ISO 228

ON REQUEST AVAILABLE IN INOX AISI 304 STEEL

All our products are tested to verify there are no leaks.
MB MICHELUZZI SRL reserves to ameliorate and modify its products anytime and without forewarning.

Materials

BODY	steel/ stainless steel AISI 304
BOTTOM	steel/ stainless steel AISI 304
FILTER CARTRIDGE	stainless steel AISI 304
AUTOMATIC VENT AIR VALVE	brass UNI EN 12165 CW617N chrome-plated
LOWER CAP	brass UNI EN 12165 CW617N chrome-plated
EXHAUST VALVE	brass UNI EN 12165 CW617N
HYDRAULIC GASKETS	EPDM, non asbestos NBR
MAGNET	neodymium
MAGNET HOLDER BULB	aluminium

Filter

To purify the water, the dirt separator has a filter that has these features:

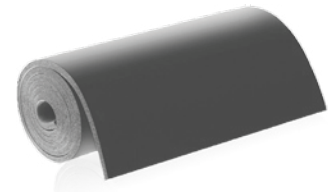
- double filtering net
- minimum filtration thickness 50 µm
- R8X4-0.8X0.8 AISI 304
- R13.8-1.5X1.5 AISI 304
- R2,5X1,5 AISI 304



Technical characteristics insulation

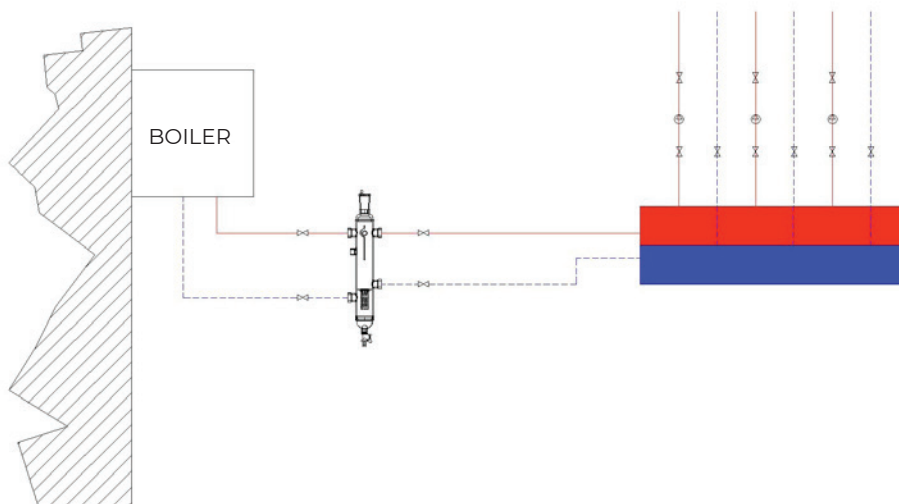
The hydraulic separator with dirt separator is insulated and there is a stainless steel protection in addition to the insulation. The insulation has these propriety:

MATERIAL	closed cell expanded elastomer
DENSITY	35kg/m ³
THERMAL CONDUCTIVITY	0.050 W/(mK)
WORKING TEMPERATURE	0°C-110°C
EXTERNAL INSULATION PROTECTION	stainless steel
THICKNESS	30mm – 40mm
FIRE REACTION	euroclass B _L -s2,d0



Installation

The separator must be installed between primary and secondary circuit.

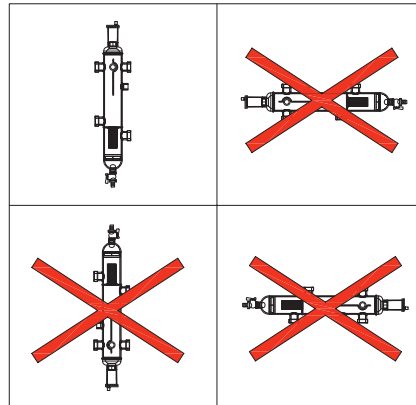


ON REQUEST AVAILABLE IN INOX AISI 304 STEEL

All our products are tested to verify there are no leaks.
 MB MICHELUZZI SRL reserves to ameliorate and modify its products anytime and without forewarning.

Placement

The positioning of the separator is correct only when it is in the position indicated in the drawing.



Production range

FEMALE THREADED CONNECTION FITS

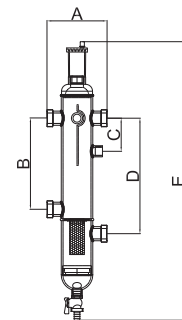
CODE		Recommended flow rate m ³ /h	Volume (l)	Mass (kg)
ART. SEDEA2501I	DN25	2,5	1,6	7
ART. SEDEA3202I	DN32	4	2,5	10
ART. SEDEA4003I	DN40	6	10,3	16,5
ART. SEDEA5004I	DN50	9,5	11	29,5
ART. SEDEA6505I	DN65	16	18,8	30,5

FLANGED FITS PN 16

CODE		Recommended flow rate m ³ /h	Volume (l)	Mass (kg)
ART. SEDEA5004IF	DN50	9,5	11	40
ART. SEDEA6505IF	DN65	16	18,8	41,5
ART. SEDEA8006IF	DN80	22	37	57,5
ART. SEDEA10007IF	DN100	37,5	37	61

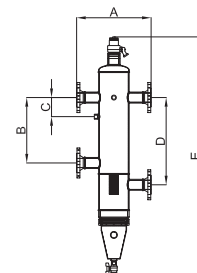
Threaded fits series size

CODE		A (mm)	B (mm)	C (mm)	D (mm)	E (mm)
SEDEA2501I	DN25	146	220	80	280	673
SEDEA3202I	DN32	157	250	80	327	695
SEDEA4003I	DN40	272	340	150	430	1140
SEDEA5004I	DN50	292	360	105	480	1310
SEDEA6505I	DN65	310	360	100	480	1310



Flanged fits series size

CODE	A (mm)	B (mm)	C (mm)	D (mm)	E (mm)
SEDEA5004IF	410	360	105	480	1310
SEDEA6505IF	415	360	100	480	1310
SEDEA8006IF	417	460	150	610	1400
SEDEA10007IF	417	460	150	610	1400



ON REQUEST AVAILABLE IN INOX AISI 304 STEEL

All our products are tested to verify there are no leaks.
MB MICHELUZZI SRL reserves to ameliorate and modify its products anytime and without forewarning.

Specification text**THREADED SET**

Hydraulic separator. Connections 1" F from 2" 1/2 f with union. Nickel plated steel body. Water use fluids, no-dangerous solution glycolates excluded from the scope of Directive 67/548/EC. Maximum glycol percentage glycol 50%. Maximum operating pressure 10 bar. Operating temperature range 0-110°C.

Supplied with:

- 1/2" - 3/4" - 1" - 2" automatic air vent valve, float in PP, hydraulic seals in EPDM, non asbestos NBR
- 1/2" - 3/4" drain valve
- 1/2" F probe holder connection
- insulation in closed cell K-flex
- Stainless steel AISI 304 insulation protection

FLANGET SET

Hydraulic separator. Flanged connections DN 80-100-125-150. Coupling with EN1092-1 counter-flange. Nickel plated steel body. Water use fluids, no-dangerous solution glycolates excluded from the scope of Directive 67/548/EC. Maximum glycol percentage glycol 50%. Maximum operating pressure 10 bar. Operating temperature range 0-110°C.

Supplied with:

- 1/2" - 3/4" - 1" - 2" automatic air vent valve, float in PP, hydraulic seals in EPDM, non asbestos NBR
- 1/2" - 3/4" drain valve
- 1/2" F - 3/4" F probe holder connection
- insulation in closed cell K-flex
- stainless steel AISI 304 insulation protection

WARNING!

The symbols on the cap of the separator indicates the presence of magnetic fields, which can cause damage to electronic devices (including pacemakers) that are placed in close proximity.



ON REQUEST AVAILABLE IN INOX AISI 304 STEEL

All our products are tested to verify there are no leaks.
MB MICHELUZZI SRL reserves to ameliorate and modify its products anytime and without forewarning.