

## DOUBLE DIRT SEPARATOR



### Description

The double dirt separator was created to increase the purification of the fluids in hydraulic systems, removing impurities as iron and slag. The double dirt separator has 2 stainless steel cartridge filter, 2 big magnet to attract iron impurities, automatic air vent valve and 2 manual drain valve. These components are insulated and have an insulation protection in stainless steel.

### Cleaning and maintenance

To function correctly, the double dirt separator requires correct maintenance. Close the circuit and download the pressure from the valve, now it is possible to remove the inspection caps, using the supplied key, remove the filter cartridges and proceed with the cleaning operation.

### Operation

To keep the fluid clean and avoid damage to the pumps or the heat generator, a double dirt separator must be installed. Dirty water passes through the filters and 2 magnet placed in accumulations of settling, when it comes out it is cleaner because the dirt has stopped inside. 2 settling chambers 2 filters and 2 magnets are used to purify the water even more.

### Technical data

|                                     |                                |
|-------------------------------------|--------------------------------|
| CODE                                | DEDOI                          |
| WORKING TEMPERATURE                 | 0°-110°                        |
| MAXIMUM WORKING PRESSURE            | 10 bar                         |
| FLUID SPEED                         | 1,3 m/s                        |
| FLUID                               | water, glycol solution 50%     |
| DIRT SEPARATOR CONNECTIONS          | female threaded connector fits |
| DRAIN VALVE CONNECTION              | ¾" - 1" F UNI ISO 228          |
| AUTOMATIC AIR VENT VALVE CONNECTION | ½" - ¾" - 1" F UNI ISO 228     |

Materials

|                          |   |
|--------------------------|---|
| BODY                     | stainless steel AISI 304                |
| INSPECTION PLUGS         | stainless steel AISI 304                |
| FILTERING CARTRIDGE      | stainless steel AISI 304                |
| AUTOMATIC AIR VENT VALVE | brass UNI EN 12165 CW617N chrome-plated |
| DRAIN VALVE              | brass UNI EN 12165 CW617N               |
| HYDRAULIC SEALS          | EPDM, non asbestos NBR                  |
| MAGNET                   | neodymium                               |
| MAGNET HOLDER BULBS      | stainless steel AISI 304                |

Filter

To purify the water, then dirt separator has 2 filter that has these features:

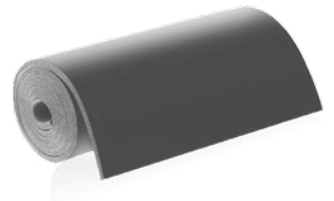
- double filtering net
- minimum filtration thickness 50 µm
- R8X4-0.8X0.8 AISI 304
- R13.8-1.5X1.5 AISI 304
- R2,5X1,5 AISI 304



Technical characteristics insulation

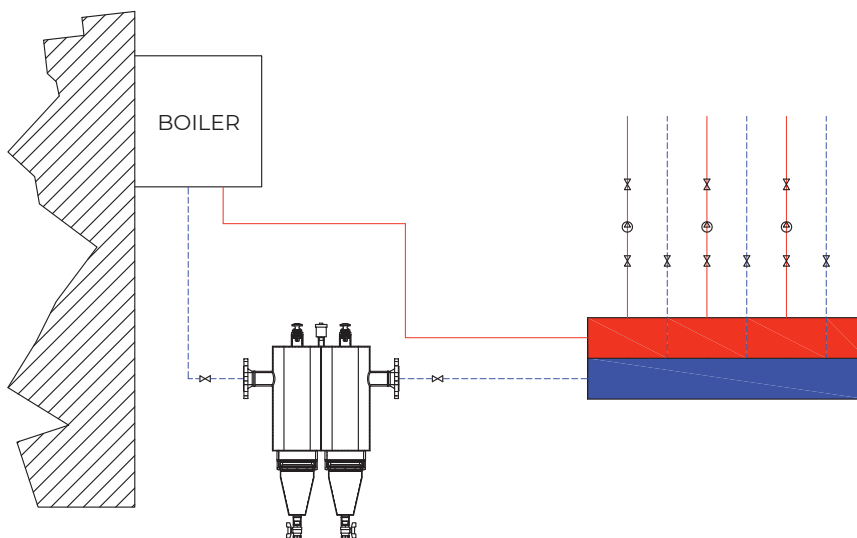
The double compact dirt separator is insulated and there is a stainless steel protection in addition to the insulation. The insulation has these propriety:

|                                |                                 |
|--------------------------------|---------------------------------|
| MATERIAL                       | closed cell expanded elastomer  |
| DENSITY                        | 35kg/m3                         |
| THERMAL CONDUCTIVITY           | 0.050 W(mK)                     |
| WORKING TEMPERATURE            | 0°C-110°C                       |
| EXTERNAL INSULATION PROTECTION | stainless steel                 |
| THICKNESS                      | 30mm – 40mm                     |
| FIRE REACTION                  | euroclass B <sub>L</sub> -s2,d0 |



Installation

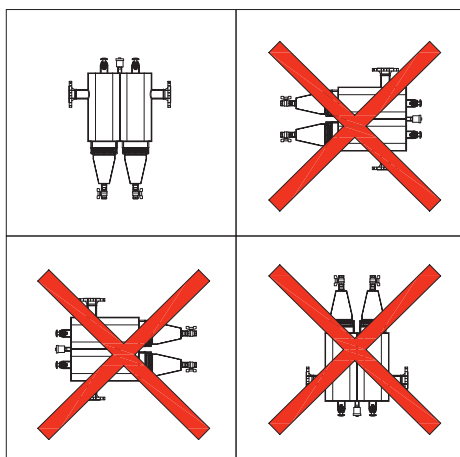
As you can see from the picture, this is the right way to install the double dirt separator.



All our products are tested to verify there are no leaks.  
 MB MICHELUZZI SRL reserves to ameliorate and modify its products anytime and without forewarning.

**Placement**

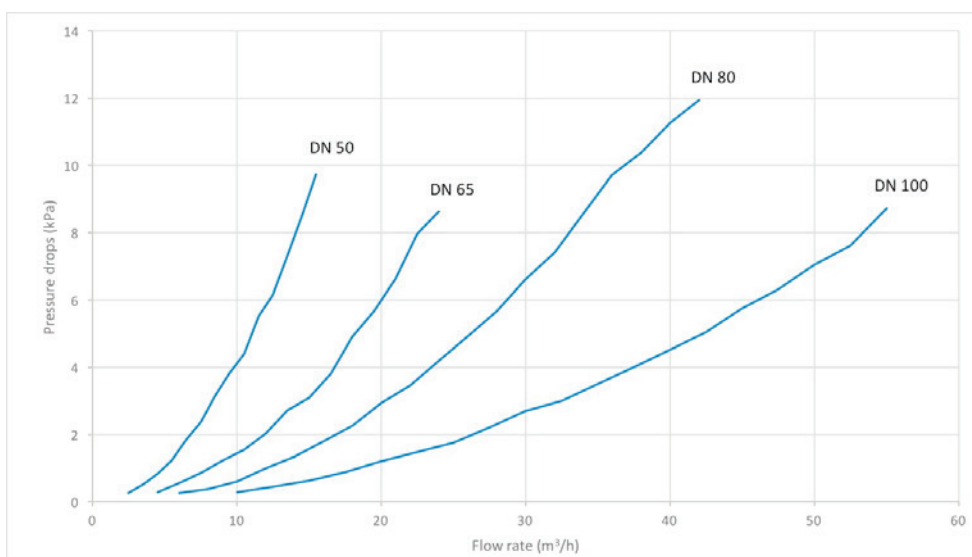
The positioning of the dirt separator with superimposed connections is correct only when it is in the position indicated in the drawing.



**Pressure drops**

Being a filtering system, which acts as a barrier to dirt, an impediment to the flow of the fluid, is obtained resulting in a pressure drop.

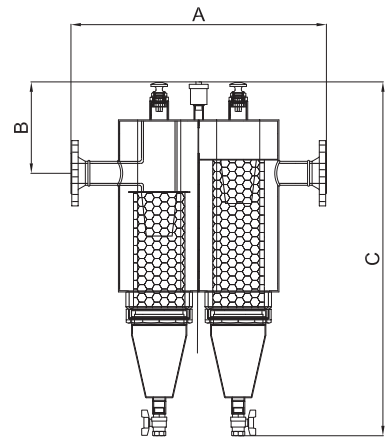
Data are shown in the graph below:



| FLANGED FITS PN 16 |       |   |            |           |
|--------------------|-------|---|------------|-----------|
| CODE               |       | Recommended flow rate m <sup>3</sup> /h | Volume (l) | Mass (kg) |
| ART. DEDO15004IF   | DN50  | 8,5                                     | 40         | 29,5      |
| ART. DEDO16505IF   | DN65  | 16                                      | 70         | 37        |
| ART. DEDO18006IF   | DN80  | 26                                      | 80         | 42        |
| ART. DEDO110007IF  | DN100 | 50                                      | 80         | 42,5      |

## Flanged fits series size

| CODE         | DN    | A (mm) | B (mm) | C (mm) |
|--------------|-------|--------|--------|--------|
| DEDOI5004IF  | DN50  | 645    | 231    | 895    |
| DEDOI6505IF  | DN65  | 755    | 265    | 1010   |
| DEDOI8006IF  | DN80  | 760    | 270    | 1050   |
| DEDOI10007IF | DN100 | 760    | 270    | 1050   |



## Specification text

## FLANGED SET

Double dirt separator. Flanged connections DN 50-65-80-100-125-150. Coupling with EN1092-1 counter flange. Nickel plated steel body. Water use fluids, non-dangerous solution glycolates excluded from the scope of Directive 67/548/EC. Maximum glycol percentage glycol 50%. Maximum operating pressure 10 bar. Operating temperature range 0-110°C.

## Supplied with:

- 1/2" - 3/4" - 1" automatic air vent valve, float in PP, hydraulic seals in EPDM, non-asbestos NBR
- 3/4" - 1" drain valve
- 1" F probe holder connection
- Insulation in closed cell K-flex
- Stainless steel AISI 304 insulation protection

**WARNING!**

The symbols on the cap of the separator indicates the presence of magnetic fields, which can cause damage to electronic devices (including pacemakers) that are placed in close proximity.

