

DIRT SEPARATOR WITH SUPERIMPOSED CONNECTIONS



Description

The dirt separator with superimposed connections was created to increase the purification of the fluids in hydraulic systems, removing impurities as iron and slag. The dirt separator has a stainless steel cartridge filter, a big magnet to attract iron impurities, automatic air vent valve and manual drain valve. These components are insulated and have an insulation protection in stainless steel.

Cleaning and maintenance

To function correctly, the dirt separator requires correct maintenance. Close the circuit and download the pressure from the valve, now it is possible to remove the inspection cap, using the supplied key, remove the filtering cartridge and proceed with the cleaning operation.

Operation

To keep the fluid clean and avoid damage to the pumps or the heat generator, a dirt separator must be installed. Dirty water passes through the filter and a magnet placed in an accumulation of settling, when it comes out it is cleaner because the dirt has stopped inside.

Technical data

CODE	DEFSA
WORKING TEMPERATURE	0°-110°
MAXIMUM WORKING PRESSURE	10 bar
MAXIMUM FLUID SPEED	1,3 M/S
FLUID	water, glycolate solution 50%
DIRT SEPARATOR CONNECTIONS	female threaded connector fits or flanged fits
DRAIN VALVE CONNECTIONS	½" F – 1"¼ F UNI ISO 228
ACCESSORIES CONNECTION	½" F UNI ISO 228
AUTOMATIC AIR VENT VALVE CONNECTIONS	1" F UNI ISO 228

Materials

BODY	steel/ stainless steel AISI 304
BOTTOM	steel/ stainless steel AISI 304
CARTRIDGE FILTER	stainless steel AISI 304
AUTOMATIC AIR VENT VALVE	brass UNI EN 12165 CW617N chrome-plated
DRAIN VALVE	brass UNI EN 12165 CW617N
HYDRAULIC SEALS	EPDM, non asbestos NBR
MAGNET	neodymium
MAGNET HOLDER BULB	stainless steel AISI 304

Filter

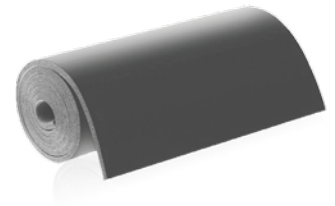
To purify the water, then dirt separator with superimposed connections has a filter that has these features:

- double filtering net
- minimum filtration thickness 50 µm
- R8X4-0.8X0.8 AISI 304
- R13.8-1.5X1.5 AISI 304
- R2,5X1,5 AISI 304

**Technical characteristics insulation**

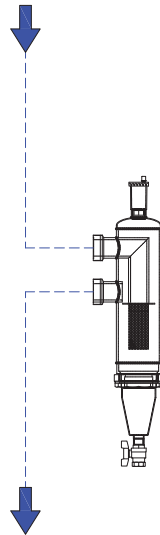
The hydraulic separator with dirt separator is insulated and there is a stainless steel protection in addition to the insulation. The insulation has these propriety:

MATERIAL	closed cell expanded elastomer
DENSITY	35kg/m ³
THERMAL CONDUCTIVITY	0.050 W(mK)
WORKING TEMPERATURE	0°C-110°C
EXTERNAL INSULATION PROTECTION	stainless steel
THICKNESS	30mm – 40mm
FIRE REACTION	euroclass B ₁ -s2,d0



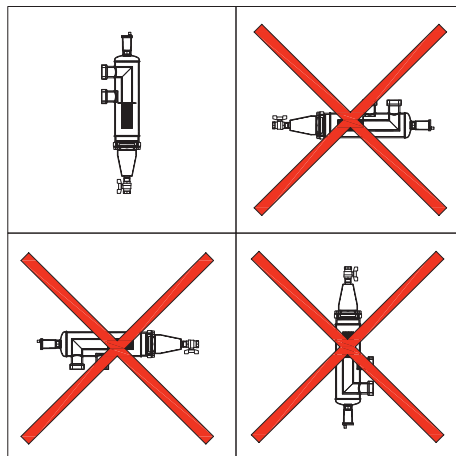
Installation

As you can see from the picture, this is the right way to install the dirt separator with superimposed connections.



Placement

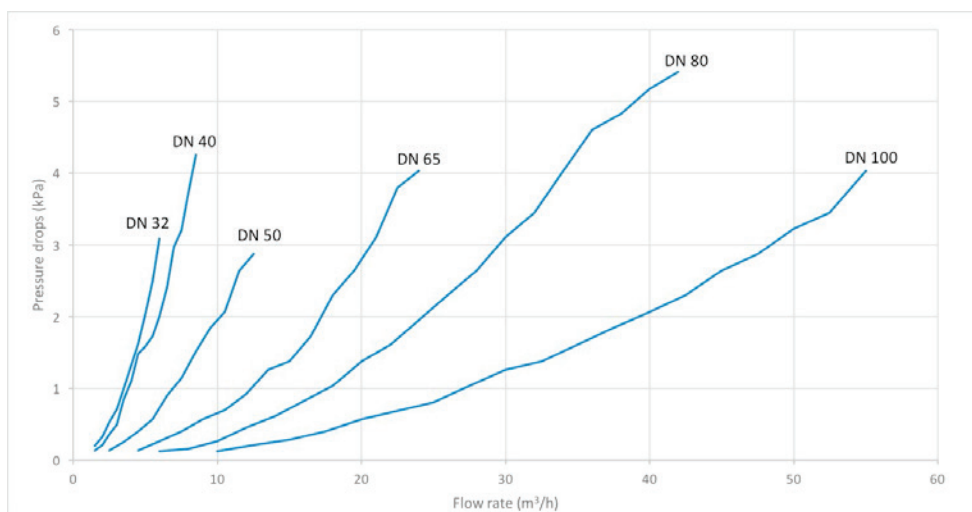
The positioning of the dirt separator with superimposed connections is correct only when it is in the position indicated in the drawing.



Pressure drops

Being a filtering system, which acts as a barrier to dirt, an impediment to the flow of the fluid, is obtained resulting in a pressure drop.

Data are shown in the graph below:



All our products are tested to verify there are no leaks.
 MB MICHELUZZI SRL reserves to ameliorate and modify its products anytime and without forewarning.

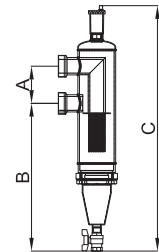
Production range

FEMALE THREADED CONNECTION FITS				
CODE		Recommended flow rate m ³ /h	Volume (l)	Mass (Kg)
ART. DEFGA3202I	DN32	4	1,5	4,5
ART. DEFGA4003I	DN40	6	3,5	15
ART. DEFGA5004I	DN50	9,5	7	22
ART. DEFGA6505I	DN65	16	13	22

FLANGED FITS PN 16				
CODE		Recommended flow rate m ³ /h	Volume (l)	Mass (Kg)
ART. DEFGA5004IF	DN50	9,5	7	27
ART. DEFGA6505IF	DN65	16	13	27,5
ART. DEFGA8006IF	DN80	22	24	35
ART. DEFGA10007IF	DN100	37,5	27	36

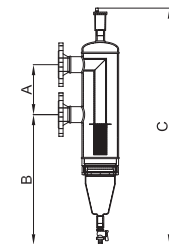
Threaded series size

CODE	DN	A (mm)	B (mm)	C (mm)
DEFGA3202I	DN32	102	241	513
DEFGA4003I	DN40	112	446	741
DEFGA5004I	DN50	132	553	900
DEFGA6505I	DN65	155	650	1045



Flanged series size

CODE	DN	A (mm)	B (mm)	C (mm)
DEFGA5004IF	DN50	190	495	900
DEFGA6505IF	DN65	216	590	1045
DEFGA8006IF	DN80	220	565	1022
DEFGA10007IF	DN100	240	625	1126



Specification text**THREADED SET**

Dirt separator with superimposed connections. Connections 1" F from 2" 1/2 f with union. Nickel plated steel body. Water use fluids, non-dangerous solution glycolates excluded from the scope of Directive 67/548/EC. Maximum glycol percentage glycol 50%. Maximum operating pressure 10 bar. Operating temperature range 0-110°C.

Supplied with:

- 1/2" - 3/4" - 1" - 2" Automatic air vent valve, float in PP, hydraulic seals in EPDM, non asbestos NBR
- 1/2" - 3/4" drain valve
- 1/2" F probe holder connection
- Insulation in closed cell K-flex
- Stainless steel AISI 304 insulation protection

FLANGED SET

Dirt separator with superimposed connections . Flanged connections DN 50-65-80-100. Coupling with EN1092-1 counter flange. Nickel plated steel body. Water use fluids, non-dangerous solution glycolates excluded from the scope of Directive 67/548/EC. Maximum glycol percentage glycol 50%. Maximum operating pressure 10 bar. Operating temperature range 0-110°C.

Supplied with:

- 1/2" - 3/4" - 1" - 2" Automatic air vent valve, float in PP, hydraulic seals in EPDM, non asbestos NBR
- 1/2"-1" 1/4 drain valve
- 1/2" F probe holder connection
- Insulation in closed cell K-flex
- Stainless steel AISI 304 insulation protection

WARNING!

The symbols on the cap of the separator indicates the presence of magnetic fields, which can cause damage to electronic devices (including pacemakers) that are placed in close proximity.

