

DIRT SEPARATOR WITH PERPENDICULAR CONNECTIONS



Description

The dirt separator with perpendicular CONNECTIONS was created to increase the purification of the fluids in hydraulic systems, removing impurities as iron and slag. The dirt separator has a stainless steel cartridge filter, a big magnet to attract iron impurities, automatic air vent valve and manual drain valve. These components are insulated and have an insulation protection in stainless steel.

Cleaning and maintenance

To function correctly, the dirt separator requires correct maintenance. Close the circuit and download the pressure from the valve, now it is possible to remove the inspection cap, using the supplied key, remove the filtering cartridge and proceed with the cleaning operation.

Operation

To keep the fluid clean and avoid damage to the pumps or the heat generator, a dirt separator must be installed. Dirty water passes through the filter and a magnet placed in an accumulation of settling, when it comes out it is cleaner because the dirt has stopped inside.

Technical data

CODE	DEFPA
WORKING TEMPERATURE	0°-110°
MAXIMUM WORKING PRESSURE	10 bar
MAXIMUM FLUID SPEED	1,3 M/S
FLUID	water, glycolate solution 50%
DIRT SEPARATOR CONNECTIONS	female threaded connector fits or flanged fits
DRAIN VALVE CONNECTION	½" F – 1"¼ F UNI ISO 228
ACCESSORIES CONNECTION	½" F - ¾" F UNI ISO 228
AUTOMATIC AIR VENT VALVE CONNECTIONS	½" F – 2" F UNI ISO 228

Materials

BODY	steel/ stainless steel AISI 304
BOTTOM	steel/ stainless steel AISI 304
CARTRIDGE FILTER	stainless steel AISI 304
AUTOMATIC AIR VENT VALVE	brass UNI EN 12165 CW617N chrome-plated
DRAIN VALVE	brass UNI EN 12165 CW617N
HYDRAULIC SEALS	EPDM, non asbestos NBR
MAGNET	neodymium
MAGNET HOLDER BULB	stainless AISI 304

Filter

To purify the water, then dirt separator with perpendicular CONNECTIONS has a filter that has these features:

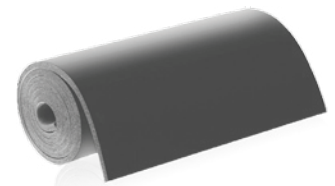
- double filtering net
- minimum filtration thickness 50 µm
- R8X4-0.8X0.8 AISI 304
- R13.8-1.5X1.5 AISI 304
- R2,5X1,5 AISI 304



Technical characteristics insulation

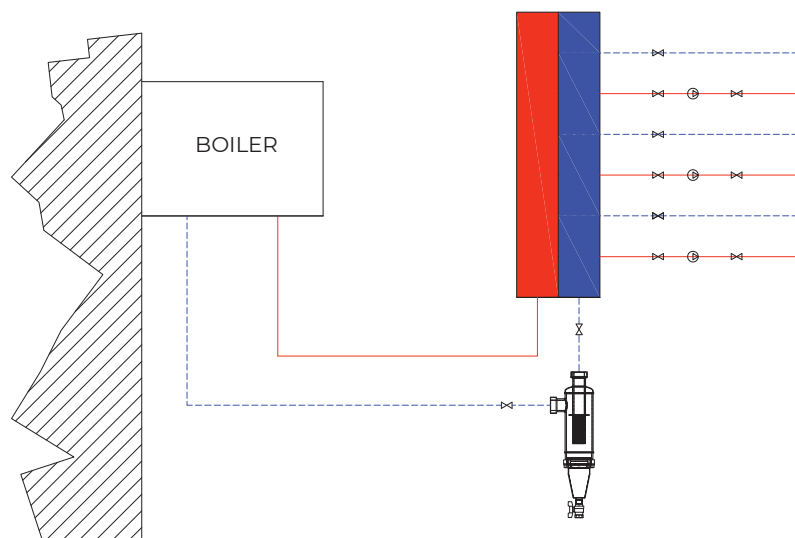
The hydraulic separator with dirt separator is insulated and there is a stainless steel protection in addition to the insulation. The insulation has these propriety:

MATERIALS	closed cell expanded elastomer
DENSITY	35kg/m ³
THERMAL CONDUCTIVITY	0.050 W/(mK)
WORKING TEMPERATURE	0°C-110°C
EXTERNAL INSULATION PROTECTION	stainless steel
THICKNESS	30mm – 40mm
FIRE REACTION	euroclass B ₁ -s2,d0



Installation

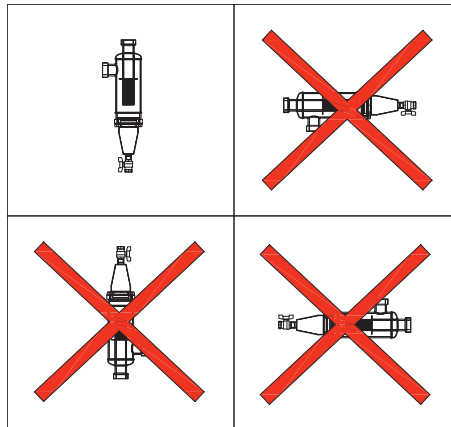
As you can see from the picture, this is the right way to install the dirt separator with perpendicular CONNECTIONS.



All our products are tested to verify there are no leaks.
 MB MICHELUZZI SRL reserves to ameliorate and modify its products anytime and without forewarning.

Placement

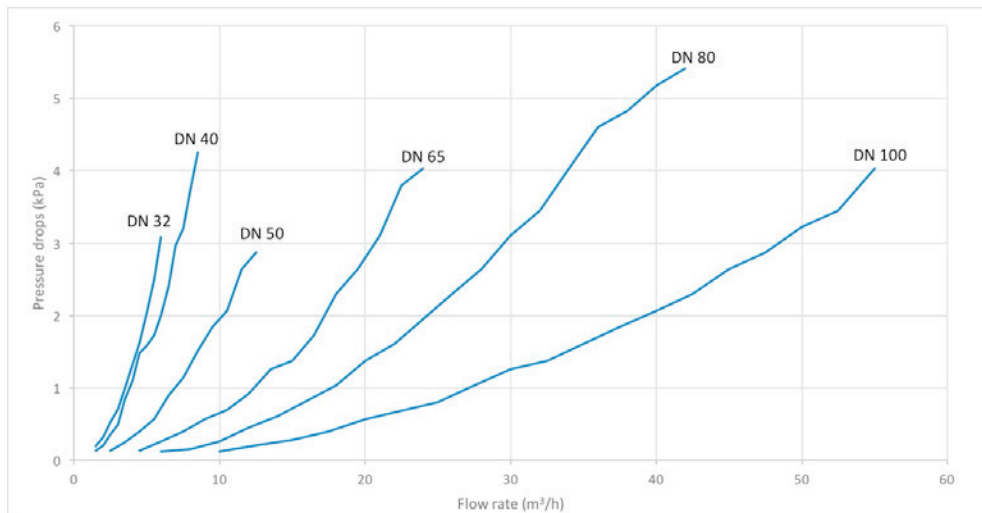
The positioning of the dirt separator with perpendicular CONNECTIONS is correct only when it is in the position indicated in the drawing.



Pressure drops

Being a filtering system, which acts as a barrier to dirt, an impediment to the flow of the fluid, is obtained resulting in a pressure drop.

Data are shown in the graph below:



Production range

FEMALE THREADED CONNECTION FITS

CODE		Recommended flow rate m ³ /h	Volume (l)	Mass (kg)
ART. DEFPA3202I	DN32	4	1,2	4
ART. DEFPA4003I	DN40	6	3	12
ART. DEFPA5004I	DN50	9,5	5	15
ART. DEFPA6505I	DN65	16	9	16

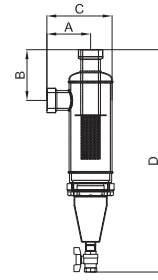
FLANGED FITS PN 16

CODE		Recommended flow rate m ³ /h	Volume (l)	Mass (kg)
ART. DEFPA5004IF	DN50	9,5	5	19
ART. DEFPA6505IF	DN65	16	9	22
ART. DEFPA8006IF	DN80	22	18,5	35
ART. DEFPA10007IF	DN100	37,5	19	36

All our products are tested to verify there are no leaks.
 MB MICHELUZZI SRL reserves to ameliorate and modify its products anytime and without forewarning.

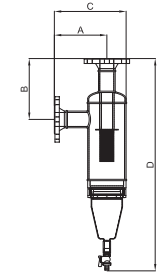
Threaded fits series size

CODE	DN	A (mm)	B (mm)	C (mm)	D (mm)
DEFPA3202I	DN32	74	99	122	370
DEFPA4003I	DN40	116	135	173	590
DEFPA5004I	DN50	135	166	205	717
DEFPA6505I	DN65	152	163,5	236	818



Flanged fits series size

CODE	DN	A (mm)	B (mm)	C (mm)	D (mm)
DEFPA5004IF	DN50	190	221	260,5	771,3
DEFPA6505IF	DN65	207.5	220	300	875
DEFPA8006IF	DN80	256.5	282.5	366	910
DEFPA10007IF	DN100	256.5	282.5	366	910



Specification text

THREADED SET

Dirt separator with perpendicular CONNECTIONS. Connections 1”F from 2”1/2 f with union. Nickel plated steel body. Water use fluids, non-dangerous solution glycolates excluded from the scope of Directive 67/548/EC. Maximum glycol percentage glycol 50%. Maximum operating pressure 10 bar. Operating temperature range 0-110°C.

Supplied with:

- 1/2”- 3/4” drain valve
- Insulation in closed cell K-flex
- Stainless steel AISI 304 insulation protection

FLANGED SET

Dirt separator with perpendicular CONNECTIONS. Flanged connections DN 50-65-80-100-125-150. Coupling with EN1092-1 counter flange. Nickel plated steel body. Water use fluids, non-dangerous solution glycolates excluded from the scope of Directive 67/548/EC. Maximum glycol percentage glycol 50%. Maximum operating pressure 10 bar. Operating temperature range 0-110°C.

Supplied with:

- 1/2”- 3/4”-1”- 1/4” drain valve
- 1/2”F probe holder connection
- Insulation in closed cell K-flex
- Stainless steel AISI 304 insulation protection

WARNING!

The symbols on the cap of the separator indicates the presence of magnetic fields, which can cause damage to electronic devices (including pacemakers) that are placed in close proximity.

