

## DIRT SEPARATOR FOR VERTICAL PIPES



### Description

The dirt separator for vertical pipes was created to increase the purification of the fluids in hydraulic systems, removing impurities as iron and slag. The dirt separator has a stainless steel cartridge filter, a big magnet to attract iron impurities, automatic air vent valve and manual drain valve. These components are insulated and have an insulation protection in stainless steel.

### Cleaning and maintenance

To function correctly, the dirt separator requires correct maintenance. Close the circuit and download the pressure from the valve, now it is possible to remove the inspection cap, using the supplied key, remove the filtering cartridge and proceed with the cleaning operation.

### Operation

To keep the fluid clean and avoid damage to the pumps or the heat generator, a dirt separator must be installed. Dirty water passes through the filter and a magnet placed in an accumulation of settling, when it comes out it is cleaner because the dirt has stopped inside.

### Technical data

CODE	DEFLA
WORKING TEMPERATURE	0°-110°
MAXIMUM WORKING PRESSURE	10 bar
MAXIMUM FLUID SPEED	1,3 m/s
FLUID	water, glycolate solution 50%
DIRT SEPARATOR CONNECTIONS	female threaded connector fits
DRAIN VALVE CONNECTION	¼" F UNI ISO 228
ACCESSORIES CONNECTION	½" F UNI ISO 228
AUTOMATIC AIR VENT VALVE CONNECTIONS	1" F UNI ISO 228

**Materials**

BODY	steel/ stainless steel AISI 304
CARTRIDGE FILTER	stainless steel AISI 304
AUTOMATIC AIR VENT VALVE	brass UNI EN 12165 CW617N chrome-plated
DRAIN VALVE	brass UNI EN 12165 CW617N
HYDRAULIC SEALS	EPDM, non asbestos NBR
MAGNET	neodymium
MAGNET HOLDER BULB	stainless steel AISI 304

**Filter**

to purify the water, than dirt separator has a filter that has these features:

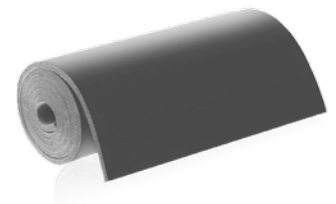
- double filtering net
- minimum filtration thickness 50 µm
- R8X4-0.8X0.8 AISI 304
- R13.8-1.5X1.5 AISI 304
- R2,5X1,5 AISI 304



**Technical characteristics insulation**

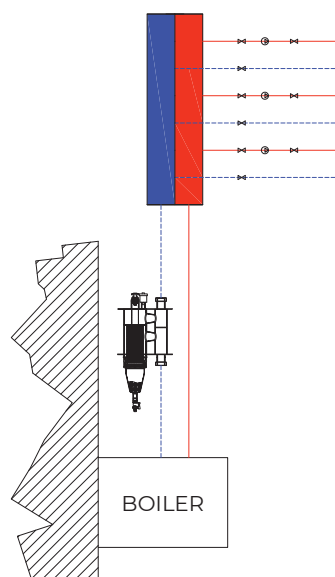
The hydraulic separator with dirt separator is insulated and there is a stainless steel protection in addition to the insulation. The insulation has these propriety:

MATERIALS	closed cell expanded elastomer
DENSITY	35kg/m3
THERMAL CONDUCTIVITY	0.050 W(mK)
WORKING TEMPERATURE	0°C-110°C
EXTERNAL INSULATION PROTECTION	stainless steel
THICKNESS	30mm – 40mm
FIRE REACTION	euroclass B <sub>1</sub> -s2,d0



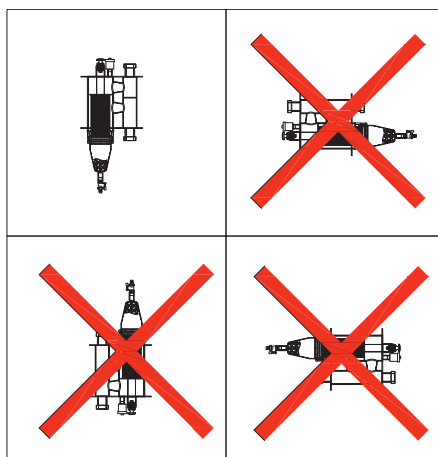
**Installation**

As you can see from the picture, this is the right way to install the dirt separator with superimposed connections.



**Placement**

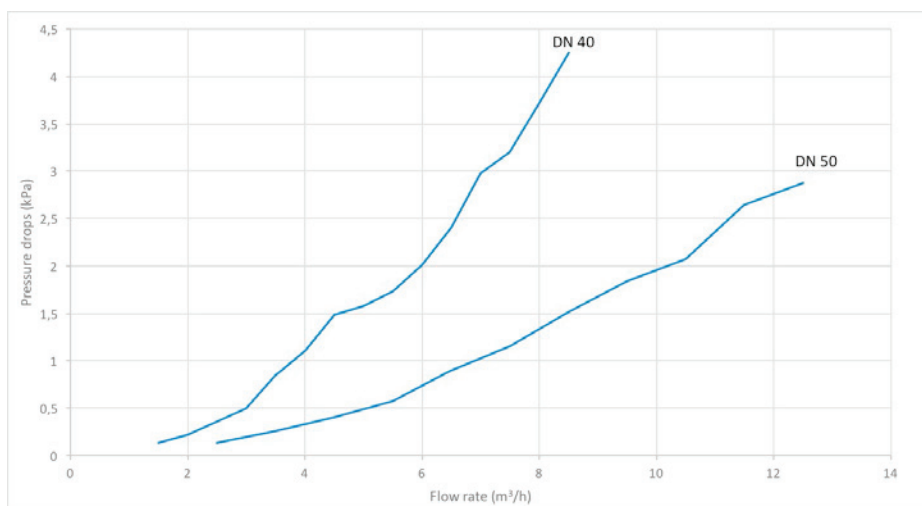
The positioning of the dirt separator with superimposed connections is correct only when it is in the position indicated in the drawing.



**Pressure drops**

Being a filtering system, which acts as a barrier to dirt, an impediment to the flow of the fluid, is obtained resulting in a pressure drop.

Data are shown in the graph below:

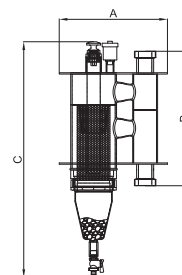


**Production range**

FEMALE THREADED CONNECTION FITS				
CODE	DN	Recommended flow rate m3/h	Volume (l)	Mass (kg)
ART. DEFLA40	DN40	6	5	8
ART. DEFLA50	DN50	8,5	8	12

**Threaded fits series size**

CODE	DN	A (mm)	B (mm)	C (mm)
DEFLA40	DN40	330	410	720
DEFLA50	DN50	365	475	810



All our products are tested to verify there are no leaks.  
 MB MICHELUZZI SRL reserves to ameliorate and modify its products anytime and without forewarning.

### Specification text

Dirt separator for vertical pipes. Connections 1"1/2 F from 2" F with union. Nickel plated steel body. Water use fluids, non-dangerous solution glycolates excluded from the scope of Directive 67/548/EC. Maximum glycol percentage glycol 50%. Maximum operating pressure 10 bar. Operating temperature range 0-110°C.

### Supplied with:

- 1/2" automatic air vent valve, float in PP, hydraulic seals in EPDM, non-asbestos NBR
- 1/2"- 3/4" drain valve
- 1/2" F probe holder connection
- Insulation in closed cell K-flex
- Stainless steel AISI 304 insulation protection

### **WARNING!**

The symbols on the cap of the separator indicates the presence of magnetic fields, which can cause damage to electronic devices (including pacemakers) that are placed in close proximity.

