

DIRT SEPARATOR



Description

The dirt separator was created to increase the purification of the fluids in hydraulic systems, removing impurities as iron and slag. The dirt separator has a stainless steel cartridge filter, a big magnet to attract iron impurities, automatic air vent valve and manual drain valve. These components are insulated and have an insulation protection in stainless steel.

Cleaning and maintenance

To function correctly, the separator requires correct maintenance. Close the circuit and download the pressure from the valve, now it is possible to remove the inspection cap, using the supplied key, remove the filtering cartridge and proceed with the cleaning operation.

Operation

To keep the fluid clean and avoid damage to the pumps or the heat generator, a dirt separator must be installed. Dirty water passes through the filter and a magnet placed in an accumulation of settling, when it comes out it is cleaner because the dirt has stopped inside.

Technical data

CODE	DEFAA
WORKING TEMPERATURE	0°-110°
MAXIMUM WORKING PRESSURE	10 bar
MAXIMUM FLUID SPEED	1,3 M/S
FLUID	water, glycolate solution 50%
DIRT SEPARATOR CONNECTIONS	female threaded connector fits or flanged fits
DRAIN VALVE CONNECTION	¼"F – 1"¼"F UNI ISO 228
ACCESSORIES CONNECTION	½"F - ¾"F UNI ISO 228
AUTOMATIC AIR VENT VALVE CONNECTIONS	½"F – 2"F UNI ISO 228

Materials

BODY	steel/ stainless steel AISI 304
BOTTOM	steel/ stainless steel AISI 304
CARTRIDGE FILTER	stainless steel AISI 304
AUTOMATIC AIR VENT VALVE	brass UNI EN 12165 CW617N chrome-plated
DRAIN VALVE	brass UNI EN 12165 CW617N
HYDRAULIC SEALS	EPDM, non asbestos NBR
MAGNET	neodymium
MAGNET HOLDER BULB	stainless steel AISI 304

Filter

To purify the water, then dirt separator has a filter that has these features:

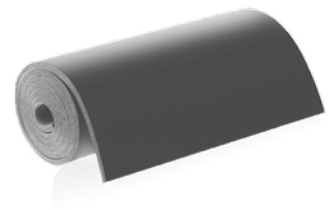
- double filtering net
- minimum filtration thickness 50 µm
- R8X4-0.8X0.8 AISI 304
- R13.8-1.5X1.5 AISI 304
- R2,5X1,5 AISI 304



Technical characteristics insulation

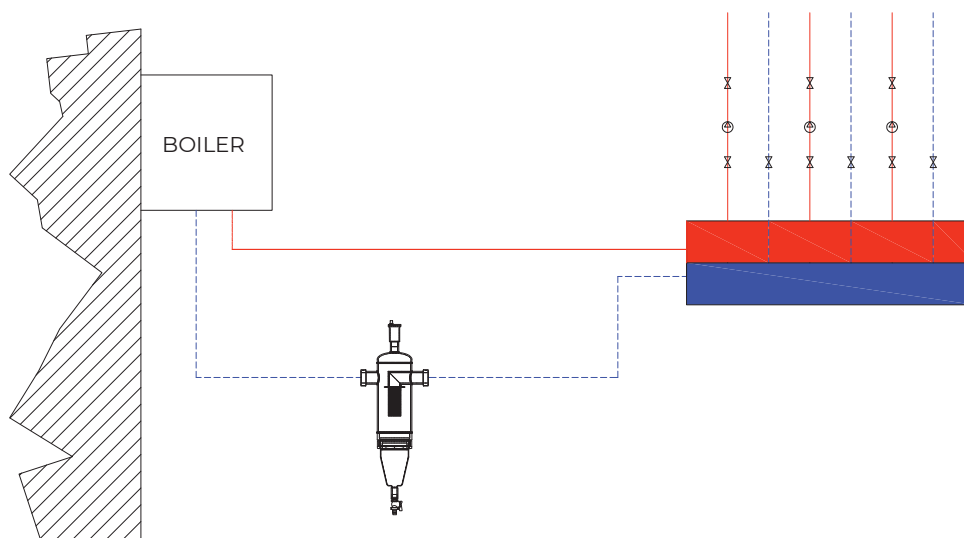
The hydraulic separator with dirt separator is insulated and there is a stainless steel protection in addition to the insulation. The insulation has these propriety:

MATERIAL	closed cell expanded elastomer
DENSITY	35kg/m3
THERMAL CONDUCTIVITY	0.050 W(mK)
WORKING TEMPERATURE	0°C-110°C
EXTERNAL INSULATION PROTECTION	stainless steel
THICKNESS	30mm – 40mm
FIRE REACTION	euroclass B ₁ -s2,d0



Installation

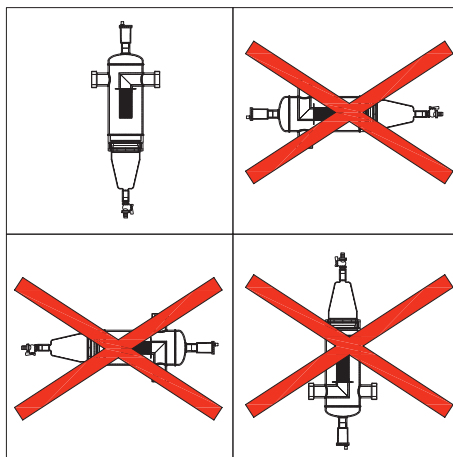
As you can see from the picture, this is the right way to install the dirt separator.



All our products are tested to verify there are no leaks.
 MB MICHELUZZI SRL reserves to ameliorate and modify its products anytime and without forewarning.

Placement

The positioning of the dirt separator is correct only when it is in the position indicated in the drawing.

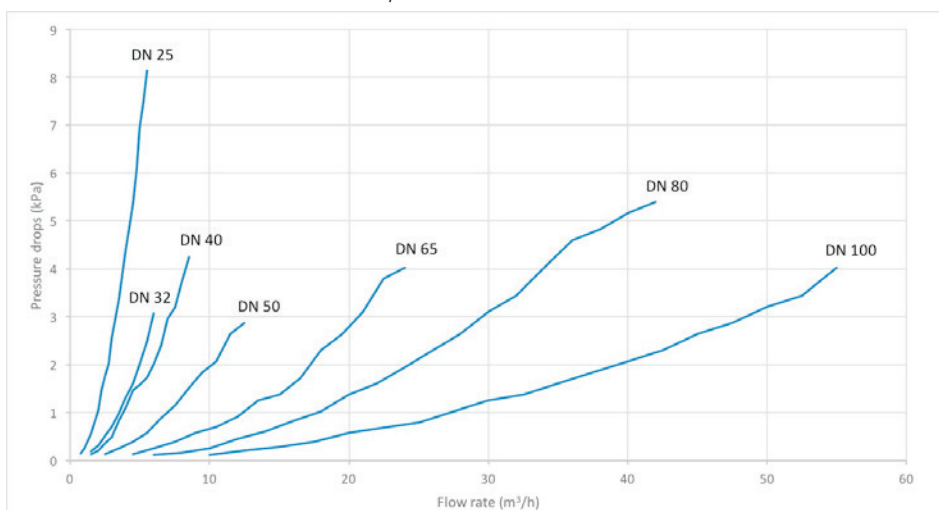


Pressure drops

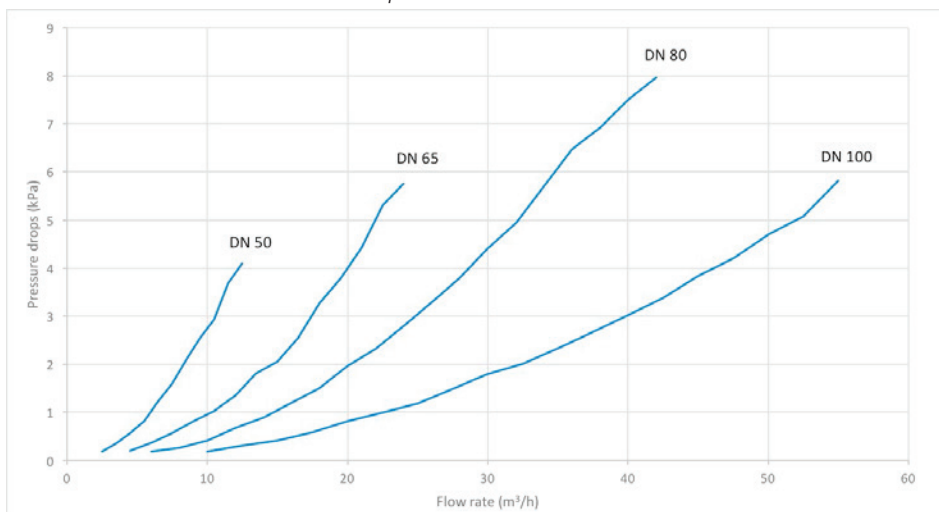
Being a filtering system, which acts as a barrier to dirt, an impediment to the flow of the fluid, is obtained resulting in a pressure drop.

Data are shown in the graph below:

Inspection from below



Inspection from above



All our products are tested to verify there are no leaks.
 MB MICHELUZZI SRL reserves to ameliorate and modify its products anytime and without forewarning.

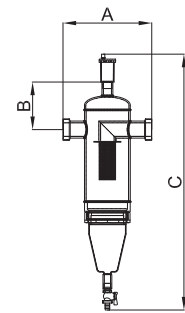
Production range

FEMALE THREADED CONNECTION FITS				
CODE		Recommended flow rate m ³ /h	Volume (l)	Mass (kg)
ART. DEFAA2501I	DN25	2,5	0,7	4,3
ART. DEFAA3202I	DN32	4	1	5,2
ART. DEFAA4003I	DN40	6	3	12
ART. DEFAA5004I	DN50	9,5	5	17
ART. DEFAA6505I	DN65	16	9	18,5

FLANGED FITS PN 16				
CODE		Recommended flow rate m ³ /h	Volume (l)	Mass (kg)
ART. DEFAA5004IF	DN50	9,5	5	21
ART. DEFAA6505IF	DN65	16	9	23
ART. DEFAA8006IF	DN80	22	19	33,5
ART. DEFAA10007IF	DN100	37,5	19	33,5
ART. DEFAA12508IF	DN125	57	50	70
ART. DEFAA15009IF	DN150	85	50	75

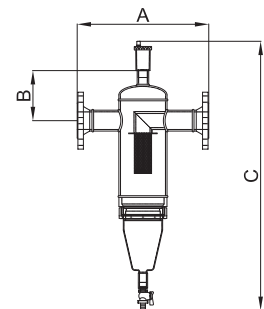
Threaded fits series size

CODE	DN	A(mm)	B (mm)	C (mm)
DAFAA2501I	DN25	150	83.5	364
DEFAA3202I	DN32	155	85	440
DEFAA4003I	DN40	232	98	640
DEFAA5004I	DN50	270	145	780
DEFAA6505I	DN65	304	133	872



Flanged fits series size

CODE	DN	A (mm)	B (mm)	C (mm)
DEFAA5004IF	DN50	381	145	780
DEFAA6505IF	DN65	415	133	872
DEFAA8006IF	DN80	513	176	900
DEFAA10007IF	DN100	513	176	900
DEFAA12508IF	DN125	660	147	805
DEFAA15009IF	DN150	660	147	805



All our products are tested to verify there are no leaks.
 MB MICHELUZZI SRL reserves to ameliorate and modify its products anytime and without forewarning.

Specification text**THREADED SET**

Dirt separator. Connections 1" F from 2" 1/2 f with union. Nickel plated steel body. Water use fluids, non-dangerous solution glycolates excluded from the scope of Directive 67/548/EC. Maximum glycol percentage glycol 50%. Maximum operating pressure 10 bar. Operating temperature range 0-110°C.

Supplied with:

- 1/2" - 3/4" - 1" - 2" automatic air vent valve, float in PP, hydraulic seals in EPDM, non asbestos NBR
- 1/2" - 3/4" drain valve
- 1/2" F probe holder connection
- Insulation in closed cell K-flex
- Stainless steel 304 insulation protection

FLANGED SET

Dirt separator. Flanged connections DN 50-65-80-100-125-150. Coupling with EN1092-1 counter flange. Nickel plated steel body. Water use fluids, non-dangerous solution glycolates excluded from the scope of Directive 67/548/EC. Maximum glycol percentage glycol 50%. Maximum operating pressure 10 bar. Operating temperature range 0-110°C.

Supplied with:

- 1/2" - 3/4" - 1" - 2" automatic air vent valve, float in PP, hydraulic seals in EPDM, non asbestos NBR
- 1/2" - 1" 1/2 drain valve
- 1/2" F probe holder connection
- Insulation in closed cell K-flex
- Stainless steel AISI 304 insulation protection

WARNING!

The symbols on the cap of the separator indicates the presence of magnetic fields, which can cause damage to electronic devices (including pacemakers) that are placed in close proximity.

