

DEAERATOR



Description

Hydraulic deaerators remove the air in hydraulic systems to obtain maximum thermal efficiency and reduce corrosion. Our deaerators have a micro-bubble filtration system, are insulated, and have an automatic air vent valve to expel the air.

Operation

To remove the air from the fluid, the water must pass through a stainless steel net where the air bubbles condense. The low speed of the water in the accumulation chamber favors the rising of the air bubbles, which will be expelled from the automatic air vent valve.

Technical data

CODE	DISAA
WORKING TEMPERATURE	0°-110°
MAXIMUM WORKING PRESSURE	10 bar
MAXIMUM FLUID SPEED	1,3 M/S
FLUID	water, glycol solution 50%
DEAERATOR CONNECTION	female threaded connector fits or flanged fits
DRAIN VALVE CONNECTION	½" F – 1"¼ UNI ISO 228
PROBE HOLDER CONNECTION	¾" F UNI ISO 228
AUTOMATIC AIR VENT VALVE CONNECTION	1" F UNI ISO 228

Materials

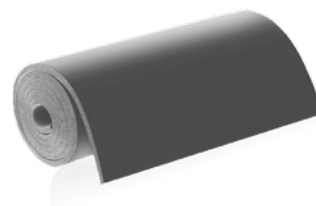
BODY	steel/ stainless steel AISI 304
UPPER BASE	steel/ stainless steel AISI 304
LOWER BOTTOM	steel/ stainless steel AISI 304
AUTOMATIC AIR VENT VALVE	brass UNI EN 12165 CW617N chrome-plated
DRAIN VALVE	brass UNI EN 12165 CW617N
HYDRAULIC SEALS	EPDM, non asbestos NBR

All our products are tested to verify there are no leaks.
 MB MICHELUZZI SRL reserves the right to improve and modify its products anytime and without forewarning.

Technical characteristics insulation

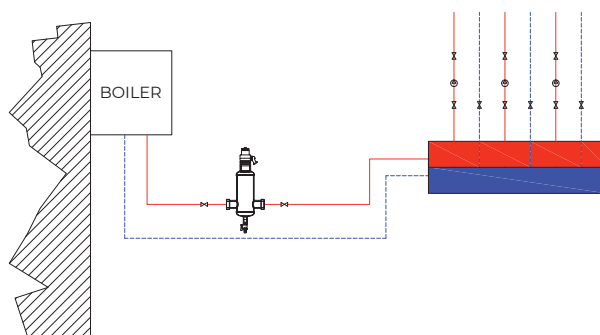
The deaerator is insulated and there is a stainless steel protection in addition to the insulation. The insulation has these propriety:

MATERIALS	closed cell expanded elastome
DENSITY	35kg/m ³
THERMAL CONDUCTIVITY	0.050 W(mK)
WORKING TEMPERATURE	0°C-110°C
EXTERNAL INSULATION PROTECTION	stainless steel
THICKNESS	30mm – 40mm
FIRE REACTION	euroclass B ₁ -s ₂ ,d ₀



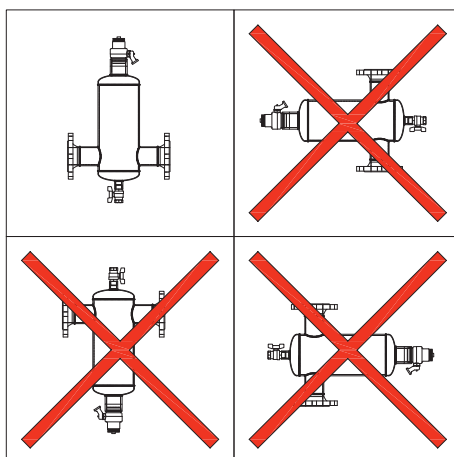
Installation

As you can see from the picture, this is the right way to install the dirt separator with superimposed connections.



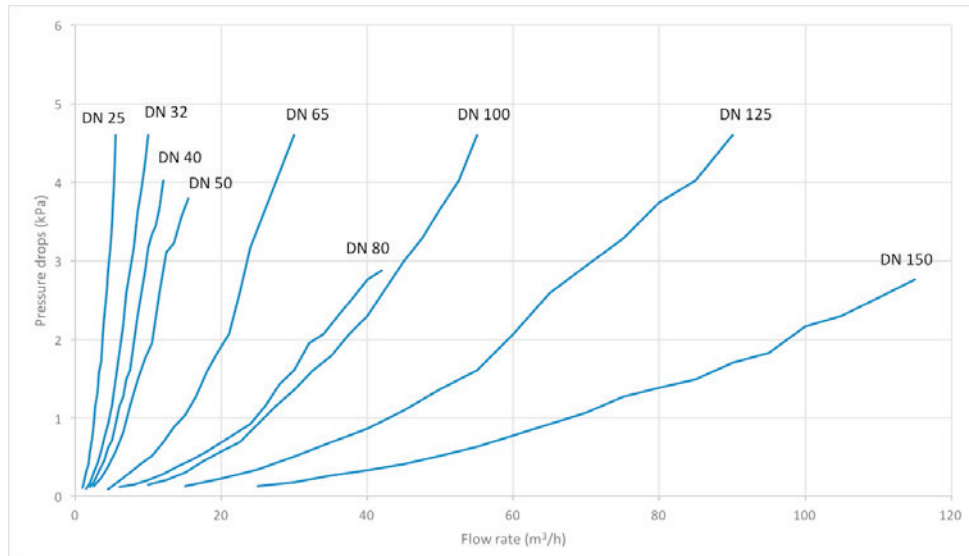
Placement

The positioning of the dirt separator with superimposed connections is correct only when it is in the position indicated in the drawing.



Pressure drops

Being a filtering system, which acts as a barrier to dirt, an impediment to the flow of the fluid, is obtained resulting in a pressure drop.
Data are shown in the graph below:



Production range

FEMALE THREADED CONNECTION FITS

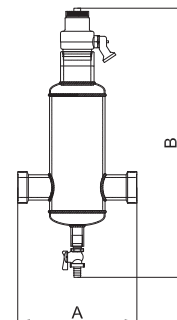
CODE	DN	Recommended flow rate m3/h	Volume (l)	Mass (kg)
ART. DISAA2501C	DN25	2,5	0,3	4
ART. DISAA3202C	DN32	4	1	5,5
ART. DISAA4003C	DN40	6	2,2	11,5
ART. DISAA5004C	DN50	9,5	6,3	12
ART. DISAA6505C	DN65	16	7,4	15,5

FLANGED FITS PN 16

CODE	DN	Recommended flow rate m3/h	Volume (l)	Mass (kg)
ART. DISAA5004CF	DN50	9,5	6,3	16
ART. DISAA6505CF	DN65	16	7,4	17
ART. DISAA8006CF	DN80	22	18,3	32
ART. DISAA10007CF	DN100	37,5	18,3	33
ART. DISAA12508CF	DN125	57	43	54
ART. DISAA15009CF	DN150	85	43	56

Threaded fits series size

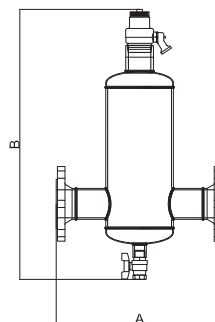
CODE	DN	A (mm)	B (mm)
DISAA2501C	DN25	145	432
DISAA3202C	DN32	155	460
DISAA4003C	DN40	245	554
DISAA5004C	DN50	292	605
DISAA6505C	DN65	310	672



All our products are tested to verify there are no leaks.
MB MICHELUZZI SRL reserves to ameliorate and modify its products anytime and without forewarning.

Flanged fits series size

CODE	DN	A (mm)	B (mm)
DISAA5004CF	DN50	350	605
DISAA6505CF	DN65	415	672
DISAA8006CF	DN80	516	770
DISAA10007CF	DN100	516	770
DISAA12508CF	DN125	620	865
DISAA15009CF	DN150	620	865



Specification text

THREADED SET

Deaerator. Connections 1" F from 2" 1/2 f with union. Nickel plated steel body. Water use fluids, non-dangerous solution glycolates excluded from the scope of Directive 67/548/EC. Maximum glycol percentage glycol 50%. Maximum operating pressure 10 bar. Operating temperature range 0-110°C.

Supplied with:

- 1/2" - 3/4" - 1" - 2" Automatic air vent valve, float in PP, hydraulic seals in EPDM, non-asbestos NBR
- 1/2" - 3/4" drain valve
- Insulation in closed cell K-flex
- Stainless steel AISI 304 insulation protection

FLANGED SET

Deaerator. Flanged connections DN 50-65-80-100-125-150. Coupling with EN1092-1 counter flange. Nickel plated steel body. Water use fluids, non-dangerous solution glycolates excluded from the scope of Directive 67/548/EC. Maximum glycol percentage glycol 50%. Maximum operating pressure 10 bar. Operating temperature range 0-110°C.

Supplied with:

- 1/2" - 3/4" - 1" - 2" automatic air vent valve, float in PP, hydraulic seals in EPDM, non-asbestos NBR
- 1/2" - 3/4" - 1" - 1 1/4" drain valve
- 3/4" F probe holder connection
- Stainless steel AISI 304 insulation protection