

COMPACT DEAERATOR



Description

Hydraulic compact deaerator remove the air in hydraulic system to obtain maximum thermal efficiency and reduce the corrosion. Our deaerator have micro-bubble filtration system, are insulate and have automatic air vent valve to expulse the air.

Operation

To remove the air from the fluid, the water must pass through a stainless steel net where the air bubbles condense. The low speed of the water in the accumulation favors the rising of the air bubbles, which will be expelled from the automatic air vent valve.

Technical data

CODE	DISCA
WORKING TEMPERATURE	0°-110°
MAXIMUM WORKING PRESSURE	10 bar
MAXIMUM FLUID SPEED	1,3 M/S
FLUID	water, glycol solution 50%
DEAERATOR CONNECTION	female threaded connector fits or flanged fits
DRAIN VALVE CONNECTION	½" F – ¾" F UNI ISO 228
AUTOMATIC AIR VENT VALVE CONNECTION	½" F – 2" F UNI ISO 228

Materials

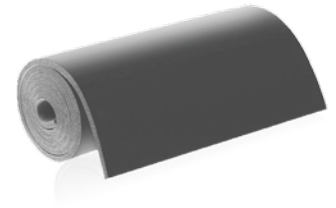
BODY	steel/ stainless steel AISI 304
BOTTOM	steel/ stainless steel AISI 304
AUTOMATIC AIR VENT VALVE CONNECTION	brass UNI EN 12165 CW617N chrome-plated
DRAIN VALVE	brass UNI EN 12165 CW617N
HYDRAULIC SEALS	EPDM, non asbestos NBR

All our products are tested to verify there are no leaks.
MB MICHELUZZI SRL reserves to ameliorate and modify its products anytime and without forewarning.

Technical characteristics insulation

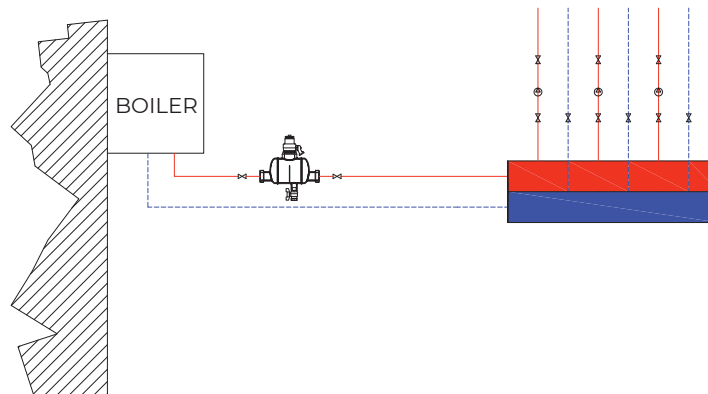
The compact deaerator is insulated and there is a stainless steel protection in addition to the insulation. The insulation has these propriety:

MATERIALS	closed cell expanded elastomer
DENSITY	35kg/m ³
THERMAL CONDUCTIVITY	0.050 W(mK)
WORKING TEMPERATURE	0°C-110°C
EXTERNAL INSULATION PROTECTION	stainless steel
THICKNESS	30mm – 40mm
FIRE REACTION	euroclass B _L -s2,d0



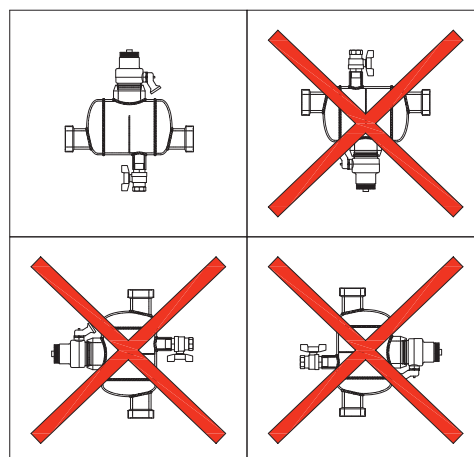
Installation

As you can see from the picture, this is the right way to install the deaerator.



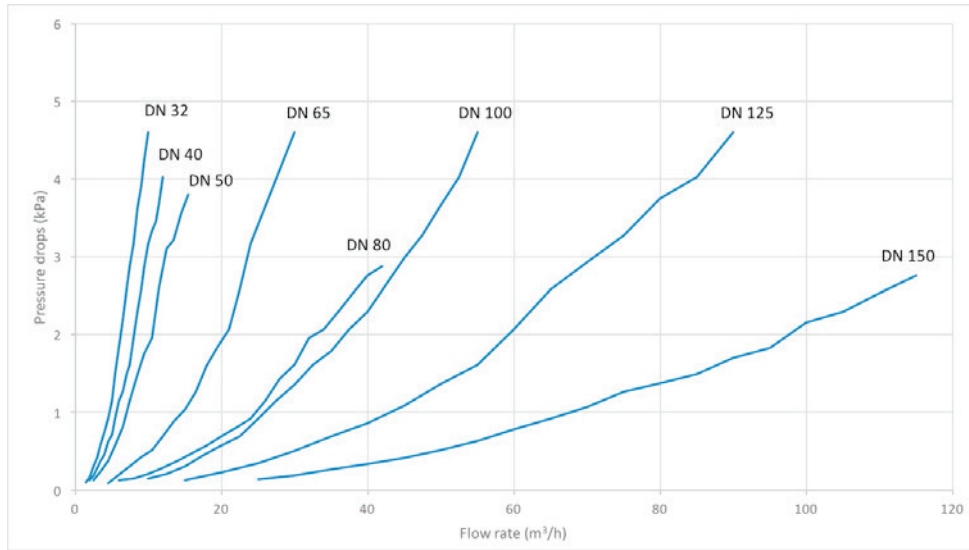
Placement

The positioning of the compact deaerator is correct only when it is in the position indicated in the drawing.



Pressure drops

Being a filtering system, which acts as a barrier to dirt, an impediment to the flow of the fluid, is obtained resulting in a pressure drop.
Data are shown in the graph below:



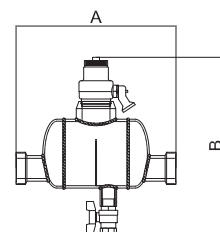
Production range

FEMALE THREADED CONNECTION FITS				
CODE	DN	Recommended flow rate m3/h	Volume (l)	Mass (kg)
ART. DISCA3202C	DN32	4	1	2
ART. DISCA4003C	DN40	6	2	5
ART. DISCA5004C	DN50	9,5	3,5	10,5
ART. DISCA6505C	DN65	16	3,5	11,5

FLANGED FITS PN 16				
CODE	DN	Recommended flow rate m3/h	Volume (l)	Mass (kg)
ART. DISCA5004CF	DN50	9,5	3,5	16
ART. DISCA6505CF	DN65	16	3,5	17
ART. DISCA8006CF	DN80	22	12,5	23
ART. DISCA10007CF	DN100	37,5	12,5	23,5
ART. DISCA12508CF	DN125	57	48,5	31
ART. DISCA15009CF	DN150	85	55,5	32

Threaded fits series size

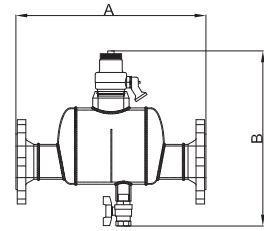
CODE	DN	A (mm)	B (mm)
DISCA3202C	DN32	226	350
DISCA4003C	DN40	324	360
DISCA5004C	DN50	361	386
DISCA6505C	DN65	361	386



All our products are tested to verify there are no leaks.
MB MICHELUZZI SRL reserves to ameliorate and modify its products anytime and without forewarning.

Flanged fit series size

CODE	DN	A (mm)	B (mm)
DISCA5004CF	DN50	420	386
DISCA6505CF	DN65	420	386
DISCA8006CF	DN80	622	456
DISCA10007CF	DN100	622	456
DISCA12508CF	DN125	935	601
DISCA15009CF	DN150	1033	601



Specification text

THREADED SET

Compact deaerator. Connections 1"1/4 F from 2"1/2 f with union. Nickel plated steel body. Water use fluids, non-dangerous solution glycolates excluded from the scope of Directive 67/548/EC. Maximum glycol percentage glycol 50%. Maximum operating pressure 10 bar. Operating temperature range 0-110°C.

Supplied with:

- 1/2" - 3/4" - 1" - 2" automatic air vent valve, float in PP, hydraulic seals in EPDM, non-asbestos NBR
- 1/2" - 3/4" drain valve
- Insulation in closed cell K-flex
- Stainless steel AISI 304 insulation protection

FLANGED SET

Compact deaerator. Flanged connections DN 50-65-80-100-125-150. Coupling with EN1092-1 counter flange. Nickel plated steel body. Water use fluids, non-dangerous solution glycolates excluded from the scope of Directive 67/548/EC. Maximum glycol percentage glycol 50%. Maximum operating pressure 10 bar. Operating temperature range 0-110°C.

Supplied with:

- 1/2" - 3/4" - 1" - 2" automatic air vent valve, float in PP, hydraulic seals in EPDM, non-asbestos NBR
- 1/2" - 3/4" drain valve
- Insulation in closed cell K-flex
- Stainless steel AISI 304 insulation protection